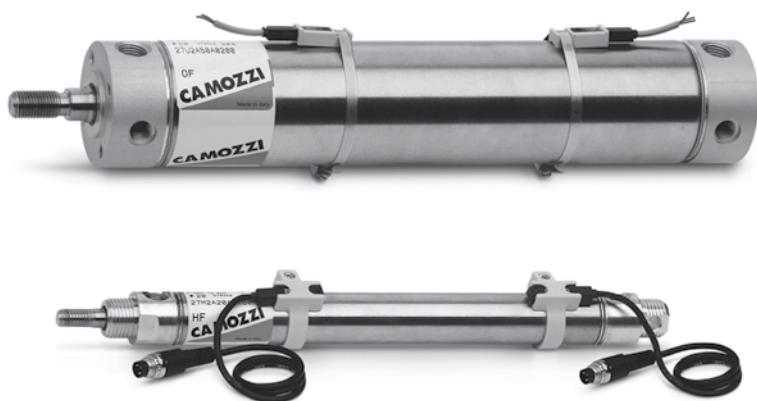


# Magnetic cylinders

## Series 27

1

Double-acting, magnetic  
 ø 20, 25, 32, 40, 50, 63



- » Reduced dimensions
- » Different mounting options
- » Perfect alignment, perfect linearity

The Series 27 have been designed to reduce the cylinders sizes as much as possible. These cylinders have been constructed with clean lines using stainless steel for both the tube and the rod and aluminium for the end blocks.

The choice of material and other design features have provided the basis for a range of versatile and reliable cylinders. The precise method of securing the tube to the end block ensures that all the parts are perfectly aligned. Mechanical cushioning has been fitted on these cylinders in order to reduce noise produced by the piston impact on the end-blocks. Series 27 cylinders are suitable for assembling with magnetic sensors. Various mounting bracket accessories are available to enable the cylinders to be fitted to suit the requirements of a particular application.

### GENERAL DATA

Type of construction	flanged
Operation	double acting
Materials	aluminium end blocks - stainless steel piston - thermoplastic resin- piston seals and rod seals PU
Mounting	feet - trunnion - steel bar - pins
Strokes min-max	all diameters 10 - 1000 mm
Bores	ø 20, 25, 32, 40, 50, 63
Operating temperature	0°C + 80°C (with dry air - 20°C)
Operating pressure	1 + 10 bar
Speed	10 + 1000 mm/sec (no load)
Fluid	filtered air, without lubrication if lubricated air is used, it is recommended to use oil ISOVG32. Once applied the lubrication should never be interrupted.

**STANDARD STROKES FOR DOUBLE-ACT. CYL. SERIES 27, 27M, 27T (ø20+40)and SERIES 27U (ø20+63)**

Ø	10	25	40	50	80	100	125	160	200	250	300	320	400	500
20	▪	▪	▪	▪	▪	▪	▪	▪	▪	▪	▪	▪	▪	▪
25	▪	▪	▪	▪	▪	▪	▪	▪	▪	▪	▪	▪	▪	▪
32	▪	▪	▪	▪	▪	▪	▪	▪	▪	▪	▪	▪	▪	▪
40	▪	▪	▪	▪	▪	▪	▪	▪	▪	▪	▪	▪	▪	▪
50	▪	▪	▪	▪	▪	▪	▪	▪	▪	▪	▪	▪	▪	▪
63	▪	▪	▪	▪	▪	▪	▪	▪	▪	▪	▪	▪	▪	▪

**CODING EXAMPLE**

<b>27</b>	<b>M</b>	<b>2</b>	<b>A</b>	<b>20</b>	<b>A</b>	<b>0050</b>
-----------	----------	----------	----------	-----------	----------	-------------

<b>27</b>	SERIES
<b>M</b>	VERSION M = rear end block upper round port for ø 20-25-32-40 T = rear end block rear round port for ø 20-25-32-40 U = rear end block upper round port for ø 20-25-32-40-50-63
<b>2</b>	OPERATION 2 = double - acting
<b>A</b>	MATERIALS A = rolled stainless steel rod stainless steel tube
<b>20</b>	BORE 20 mm 25 mm 32 mm 40 mm 50 mm 63 mm
<b>A</b>	TYPE OF DESIGN A = standard
<b>0050</b>	STROKE (see table)

**MAGNETIC CYLINDERS SERIES 27**



Rod fork end Mod. GY



Coupling piece Mod. GKF (New)



Self aligning rod Mod. GK (New)



Threaded trunnion pin Mod. T



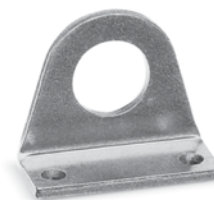
Piston rod socket joint Mod. GY



Swivel ball joint Mod. GA



Foot mount Mod. B



Foot mount Mod. B



Nose nut Mod. V



All accessories are supplied separately except for piston rod lock nut Mod. U



Rear trunnion bracket Mod. I

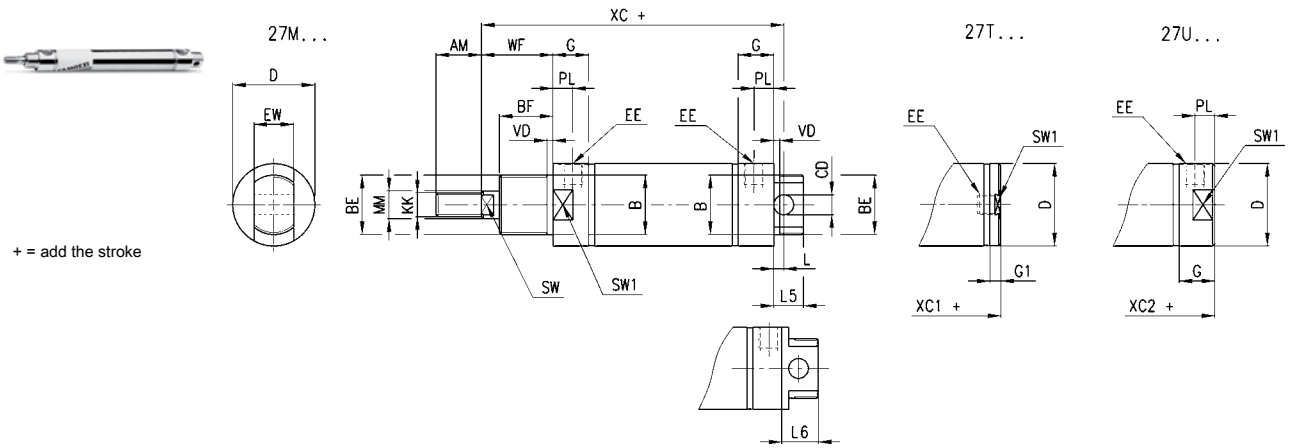


Piston rod lock nut Mod. U



Rear trunnion bracket Mod. I

Cylinders Series 27 (Ø 20, 25, 32, 40)

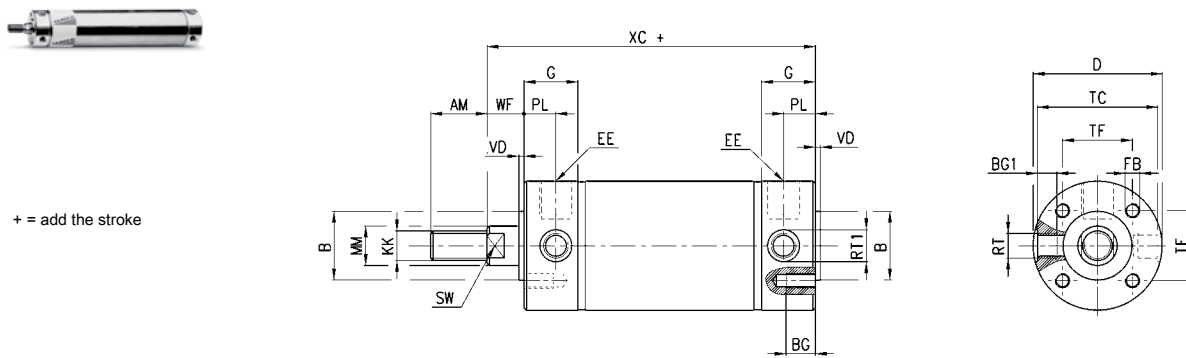


+ = add the stroke

DIMENSIONS

Ø	AM	B	BF	BE	CD <sup>h9</sup>	øD	EE	EW	G	G1	KK	L	L6	øMM	L5	PL <sup>h9</sup>	SW	VD	WF	XC+	XC1+	XC2+	SW1
20	14	16	12	M16x1,5	6	21,5	G1/8	12	15,5	8	M8x1,25	7	-	8	13	9	7	3	17	77	62,5	70,8	19
25	16	18	12	M18x1,5	8	26,5	G1/8	14	15,5	8	M10x1,25	9	-	10	17	9	9	3	16,5	78,5	62	69,5	24
32	22	22	15	M22x1,5	8	33,5	G1/8	16	17,5	5,5	M10x1,25	7	20	12	15	9	10	3	23	93	74	86	30
40	23	30	15	M30x1,5	10	41,5	G1/8	20	18	5,5	M12x1,25	5	24	16	15	10	13	3	24	96	78,5	91	38

Cylinders Series 27(Ø 50, 63)



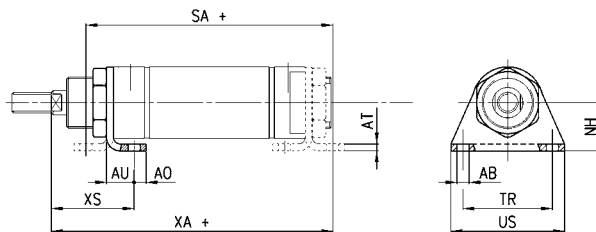
+ = add the stroke

DIMENSIONS

Ø	AM	øB	BG	BG1	øD	EE	FB	G	KK	øMM <sup>h9</sup>	PL	RT	RT1	SW	TC	TF	VD	WF	XC+
50	23	28	12	8	52,5	G1/4	M6	22	M12x1,25	16	13	M10x1	13	13	49	28,5	2	13	97
63	30	35	12	9,5	65,5	G1/4	M8	22	M16x1,5	20	13	M12x1,5	15	17	62	35,5	2	13	99

Foot mount Mod. B

Material: zinc-plated steel.  
 Supplied with:  
 1x foot  
 1x front end cap nut mod. V

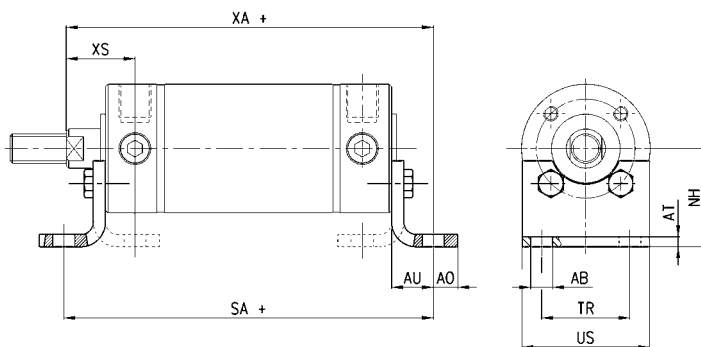


+ = add the stroke

DIMENSIONS											
Mod.	∅	∅AB	AO	AT	AU	NH	SA+	TR	US	XA+	XS
<b>B-27-20</b>	20	5,5	6	3	13	20	79	32	42	83	27
<b>B-27-25</b>	25	6,6	8	3	12,5	22	78	38	49	82	26
<b>B-27-32</b>	32	6,6	8	4	16	25	95	40	54	102	35
<b>B-27-40</b>	40	7	7	4	16	28	99	52	66	107	36

Foot mount Mod. B

Material: zinc-plated steel.  
 Supplied with:  
 2x feet  
 4x screws

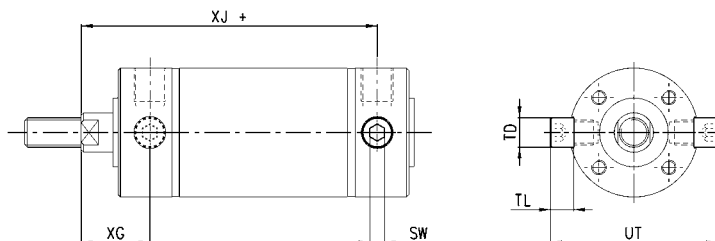


+ = add the stroke

DIMENSIONS											
Mod.	∅	∅AB	AO	AT	AU	NH	SA+	TR	US	XA+	XS
<b>B-27-50</b>	50	9	10	4	17	40	118	36	52	114	26
<b>B-27-63</b>	63	9	10	5	19	47	124	45	61	118	27

Threaded trunnion pin Mod. T

Material: stainless steel.  
 Supplied with:  
 2x pins

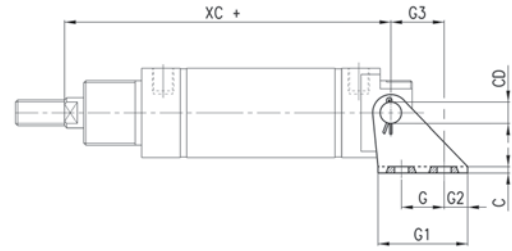
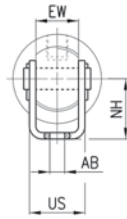


+ = add the stroke

DIMENSIONS								
Mod.	∅	SW	SW	∅TD <sup>h9</sup>	TL	UT	XG	XJ+
<b>T-27-50</b>	50	6	6	12	9,5	68	26	84
<b>T-27-63</b>	63	6	6	14	11	84	26	86

Rear trunnion bracket Mod. I

Material: zinc-plated steel.  
 Supplied with:  
 1x female hinge  
 1x pin  
 2x Seeger



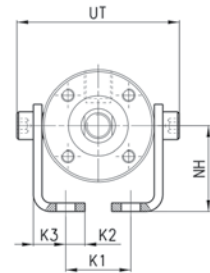
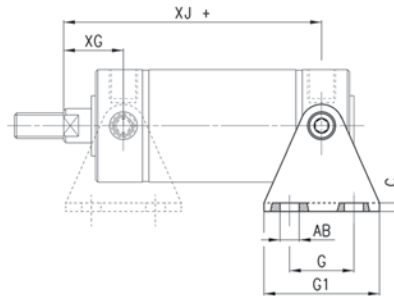
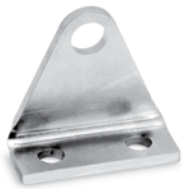
+ = add the stroke

DIMENSIONS

Mod.	∅	G	G1	G2	G3	C	XC+	∅AB	US	NH	∅CD	EW
I-27-20	20	15	30	8	18,5	1,5	77	5,5	15	20	6	12
I-27-25	25	15	33	9	20	2	78,5	6,6	18	22	8	14
I-27-32	32	15	35	10	20	2	93	6,6	20,5	25	8	16
I-27-40	40	20	42	11	25	3	96	7	26	28	10	20

Rear trunnion bracket Mod. I

Material: zinc-plated steel.  
 Supplied with:  
 2x pins  
 2x feet



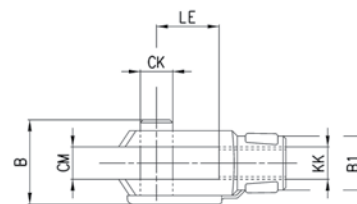
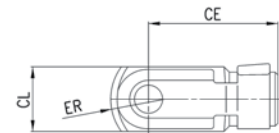
+ = add the stroke

DIMENSIONS

Mod.	∅	G	G1	C	XJ+	XG	∅AB	K1	K1	K2	K3	NH	UT
I-27-50	50	30	54	4	84	26	9	9	30,5	9	15	40	68
I-27-63	63	40	64	5	86	26	9	9	40,5	9	17,5	47	84

Rod fork end Mod.G

ISO 8140  
 Material: zinc-plated steel.

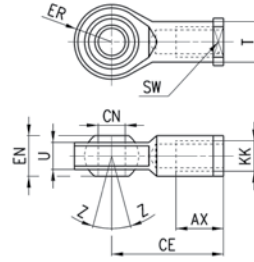


DIMENSIONS

Mod.	∅	∅CK	LE	CM	CL	ER	CE	KK	B	∅B1
G-20	20	8	16	8	16	10	32	M8x1,25	22	14
G-25-32	25-32	10	20	10	20	12	40	M10x1,25	26	18
G-40	40-50	12	24	12	24	14	48	M12x1,25	32	20
G-50-63	63	16	32	16	32	19	64	M16x1,5	40	26

Swivel ball joint Mod. GA

ISO 8139  
Material: zinc-plated steel.

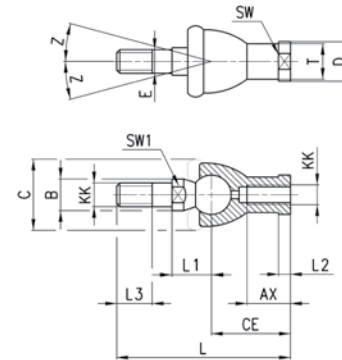


DIMENSIONS

Mod.	Ø	ø <sub>CN</sub> <sup>(H7)</sup>	U	EN	ER	AX	CE	KK	ø <sub>T</sub>	Z	SW
<b>GA-20</b>	20	8	9	12	12	16	36	M8x1,25	12,5	6,5	14
<b>GA-32</b>	25-32	10	10,5	14	14	20	43	M10x1,25	15	6,5	17
<b>GA-40</b>	40-50	12	12	16	16	22	50	M12x1,25	17,5	6,5	19
<b>GA-50-63</b>	63	16	15	21	21	28	64	M16x1,5	22	7,5	22

Piston rod socket joint Mod. GY

Material: zama and zinc-plated steel.

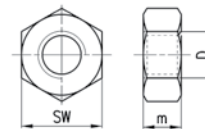


DIMENSIONS

Mod.	Ø	KK	L	CE	L2	AX	E	ø <sub>B</sub>	ø <sub>C</sub>	T	D	L1	L3	SW1	SW	Z
<b>GY-20</b>	20	M8x1,25	65	32	5	16	8	12	24	12,5	16	16	12	10	14	15
<b>GY-25-32</b>	25-32	M10x1,25	74	35	6,5	18	10	14	28	15	19	19,5	15	11	17	15
<b>GY-40</b>	40-50	M12x1,25	84	40	6,5	20	12	19	32	17,5	22	21	17	17	19	15
<b>GY-50-63</b>	63	M16x1,5	112	50	8	27	16	22	40	22	27	27,5	23	19	22	11

Piston rod lock nut Mod. U

UNI EN ISO 4035  
Material: zinc-plated steel.

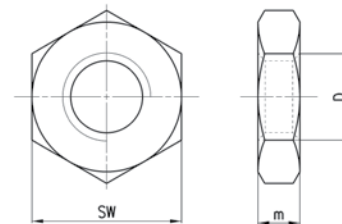


DIMENSIONS

Mod.	Ø	D	m	SW
<b>U-20</b>	20	M8x1,25	5	13
<b>U-25-32</b>	20-32	M10x1,25	6	17
<b>U-40</b>	40-50	M12x1,25	7	19
<b>U-50-63</b>	63	M16x1,5	8	24

Nose nut Mod. V

UNI EN ISO 4035  
V-27-25 / V-42-32 not according norm.  
Material: zinc-plated steel.

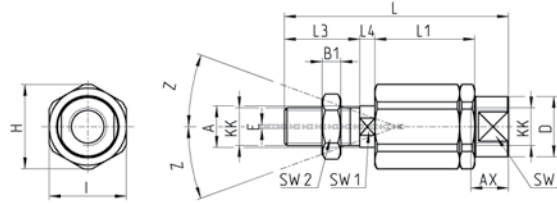


DIMENSIONS

Mod.	Ø	D	m	SW
<b>V-12-16</b>	20	M16x1,5	6	24
<b>V-27-25</b>	25	M18x1,5	5	24
<b>V-20-25</b>	32	M22x1,5	10	32
<b>V-42-32</b>	40	M30x1,5	8	-

Self aligning rod Mod. GK

New

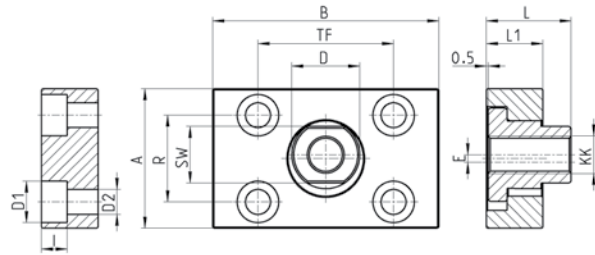
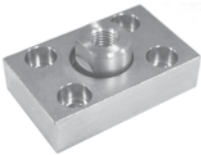


DIMENSIONS

Mod.	∅	KK	L	L1	L3	L4	∅ A	∅ D	H	I	SW	SW1	SW2	B1	AX	Z	E
<b>GK-20</b>	20	M8x1,25	57	26	21	5	8	12,5	19	17	11	7	13	4	16	4	2
<b>GK-25-32</b>	25-32	M10x1,25	71,5	35	20	7,5	14	22	32	30	19	12	17	5	22	4	2
<b>GK-40</b>	40	M12x1,25	75,5	35	24	7,5	14	22	32	30	19	12	19	6	22	4	2
<b>GK-50-63</b>	50-63	M16x1,5	104	53	32	10	22	32	45	41	27	20	24	8	30	3	2

Coupling piece Mod. GKF

New



DIMENSIONS

Mod.	∅	KK	A	B	R	TF	L	L1	I	∅ D	∅ D1	∅ D2	SW	E
<b>GKF-20</b>	20	M8x1,25	30	35	20	25	22,5	10	-	14	5,5	-	13	1,5
<b>GKF-25-32</b>	25-32	M10x1,25	37	60	23	36	22,5	15	6,8	18	11	6,6	15	2
<b>GKF-40</b>	40	M12x1,25	56	60	38	42	22,5	15	9	20	15	9	15	2,5
<b>GKF-50-63</b>	50-63	M16x1,5	80	80	58	58	26,5	15	10,5	25	18	11	22	2,5