

Silencers

Series 29** 01-03-21-31-38-39-05- RSW

Ports: M5, G1/8, G1/4, G3/8, G1/2, G3/4, G1



The silencers are indispensable elements for eliminating or reducing the characteristic noise of compressed air during discharge operations. They should always be placed on the outlets of 3/2, 5/2 or 5/3-way valves.

When carrying out maintenance, the silencers should be degreased using white spirit or paraffin and compressed air blown through them in the opposite direction to operation.

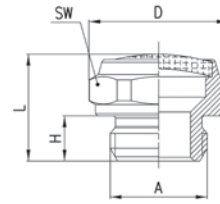
Flow rate: determined with inlet supply 6 bar and output in atmosphere.

Noise level: In order to determine the level of noise, a test is carried out using a phonometer. Placing the phonometer one meter away from the application at the same height for a period of ten seconds gives an average reading of the noise generated.

GENERAL DATA

Construction	body with male and female thread
Materials used for body	OT58 brass (2901-2903) - coppering steel (2921-2931) - polyethylene (2938-2939)
Materials used for silencing	stainless steel (2901-2903)- bronze (sintered) (2921-2931) - polyethylene (2938-2939)
Ports	M5 - G1/8 - G1/4 - G3/8 - G1/2 - G3/4 - G1

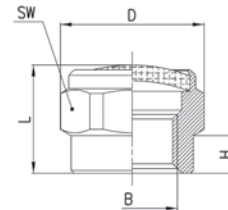
Silencers Series 2901



DIMENSIONS								
Mod.	A	D	H	L	SW	Max. Oper. Pressure	Flow rate NI/Min	Noise db (A)
2901 1/8	G1/8	15,3	5	12	14	10	700	75
2901 1/4-17	G1/4	18,5	6	14	17	10	1000	78
2901 1/4-22	G1/4	23,5	6	15	22	10	1600	92
2901 3/8	G3/8	23,5	7	16	22	10	1500	76
2901 1/2	G1/2	29,5	8	17,5	27	10	3400	86
2901 3/4	G3/4	34	9	20	32	6	4100	87
2901 1	G1	43	11	24,5	40	6	7600	88



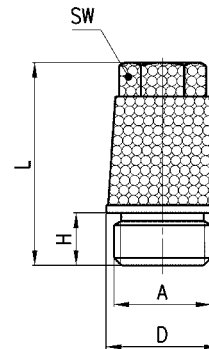
Silencers Series 2903



DIMENSIONS								
Mod.	B	D	H	L	SW	Max. Oper. Pressure	Flow rate NI/Min	Noise db(A)
2903 1/8	G1/8	15,3	4	11	14	10	700	74



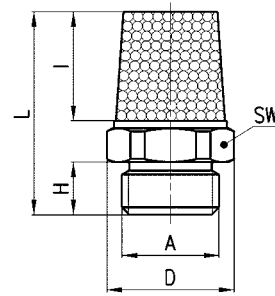
Silencers Series 2921



DIMENSIONS								
Mod.	A	D	H	L	SW	Max. Oper. Pressure	Flow rate NI/Min	Noise db(A)
2921 1/8	G1/8	12	4,5	21,5	8	10	1730	81
2921 1/4	G1/4	15	6	28	10	10	3300	85
2921 3/8	G3/8	19	8	37	13	10	4250	79
2921 1/2	G1/2	23	9	43,5	15	10	6800	87
2921 3/4	G3/4	30	10	56	19	10	9800	84
2921 1	G1	37	12	67	24	10	10900	86



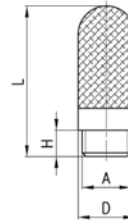
Silencers Series 2931



DIMENSIONS									
Mod.	A	D	H	I	L	SW	Max. Oper. Pressure	Flow rate NI/Min	Noise db (A)
2931 M5	M5	7,7	4	8	16,5	7	10	450	69
2931 M7	M7	9	5	8,5	20	8	10	1130	76
2931 1/8	G1/8	13	4,5	13	21	12	10	1927	88
2931 1/4	G1/4	16,2	6	16,5	27	15	10	3200	86
2931 3/8	G3/8	20	7	23	35,5	19	10	4560	81
2931 1/2	G1/2	24,5	8	28	42	23	10	6800	87
2931 3/4	G3/4	32	9	37	54	30	10	9600	84
2931 1	G1	38,5	11	47	67	36	10	10800	86



Silencers Series 2938

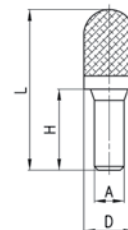


DIMENSIONS							
Mod.	A	D	H	L	Max. Oper. Pressure	Flow rate NI/Min	Noise db (A)
2938 M5	M5	6,5	4,1	23	10	546	67
2938 1/8	G1/8	12,5	5,7	34	10	1441	75
2938 1/4	G1/4	15,5	7	42,5	10	2752	79
2938 3/8	G3/8	18,5	11,5	67,5	10	4735	73
2938 1/2	G1/2	23,5	11	77	10	8534	86



Operating temperature:
- 40 / + 80 °C

Silencers Series 2939



DIMENSIONS							
Mod.	A	D	H	L	Max. Oper. Pressure	Flow rate NI/Min	Noise db (A)
2939 4	4	7	16	32	10	335	80
2939 6	6	12,5	20,5	45	10	632	79
2939 8	8	13,5	21,5	43,5	10	1229	89
2939 10	10	15,5	26,5	57,5	10	2650	87

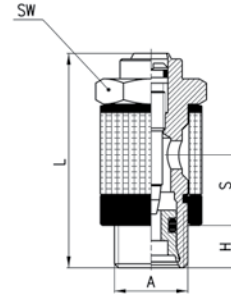


Operating temperature:
- 40 / + 80 °C

Silenced exhaust controller Mod. SCO + 290.....



See flow controllers



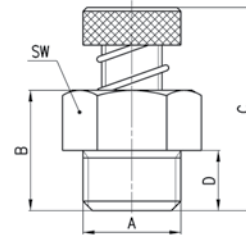
Mod.	A	H	L	S	SW
SCO + 2905	M5	3,5	21,5	5,5	8
SCO + 2905	1/8	6	35,5	12,5	14
SCO + 2905	1/4	8	37,5	12,5	17

Silenced exhaust regulator Series RSW

Silenced exhaust regulator ports G1/8, G1/4 and G1/2



See flow controllers



Mod.	A	B	C	D	SW	Qn (NI /mm)
RSW 1/8	G 1/8	13	22	6	12	410
RSW 1/4	G 1/4	16	27	8	16	650
RSW 1/2	G 1/2	26	35	11	26	1590

Qn measured at 6 bar - Free flow, maximum screw opening.

