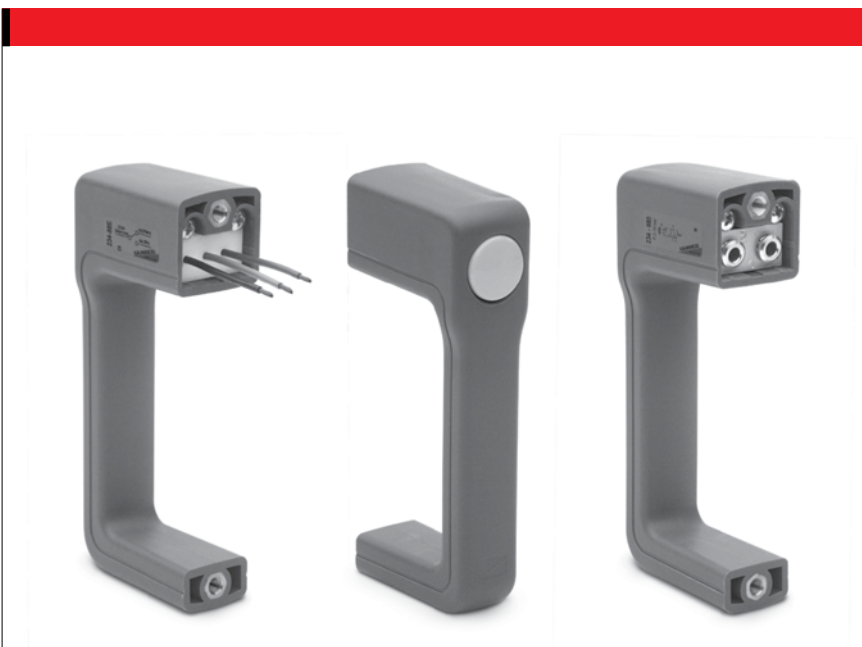


Mini-handle valve Series 2

2

Handle with incorporated micro valve 3/2 NC
 Handle with incorporated micro switch

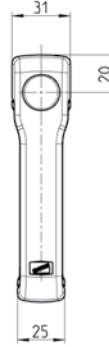
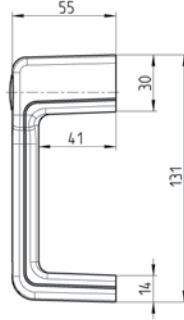
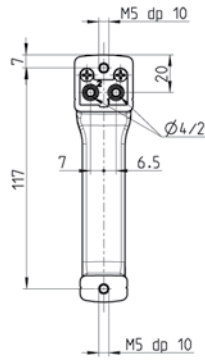
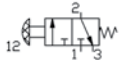


Manual handle with integrated pneumatic micro valve 3/2 or with an electrical micro switch with single pole changeover contacts. Rugged construction particularly suited to be incorporated in to other equipment.

GENERAL DATA

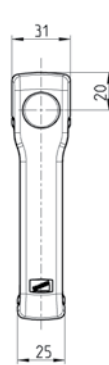
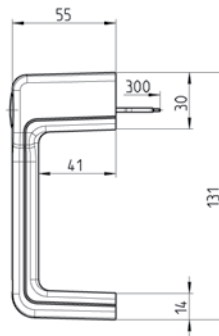
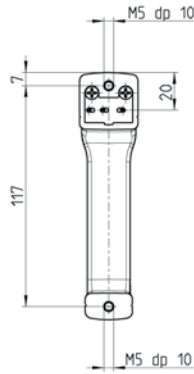
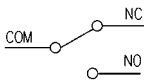
Construction	poppet-type (closed centres)
Valve group	way/pos. 3/2 ways N.C.
Nominal diameter	2,5 mm
Fixing	N°2 holes M5
Ports	push in cartridge Ø4
Installation	in any position
Operating temperature	0 + +70°C (-20°C with dry air)
Operating pressure	2 + 8 bar
Nominal flow rate	Qn 60 NI/min. (6 bar p1)
Fluid	Filtered air, without lubrication. If lubricated air is used, it is recommended to use ISO VG32 oil. Once applied the lubrication should never be interrupted.
Actuating force	at 6 bar 13N
Construction	switch device
Electrical connections	3 wires Ø external 2,2 mm internal section 0,5 length 30 cm N.C. = black wire N.O. = blue wire
Fixing	N° 2 holes M5
Mounting	in any position
Operating temperature	0 + +70°C
Protection class	IP40
Activation stroke	2 mm
Actuating force	5 N

Handle



Mod.
234-885

Handle



Electrical characteristics

Mod.	Voltage	Non-inductive load Resist. N.C. / N.O.	Non-inductive load Lamp N.C. / N.O.	Inductive load N.C. / N.O.	Inductive load Motor N.C./N.O.
234-88E	125VAC	5A	1,5 A / 0,7 A	3 A	2,5 A / 1,3 A
	250 VAC	3A	1 A / 0,5 A	2 A	1,5 A / 0,8 A
	8 VDC	5A	2 A	5 A / 4 A	3 A
	14 VDC	5A	2 A	4 A	3 A
	30 VDC	4A	2 A	3 A	3 A
	125 VDC	0,4A	0,05 A	0,4 A	0,05 A
	250 VDC	0,2A	0,03 A	0,2 A	0,03 A

234-88E	The above-mentioned values refer to steady-state-current	The inductive load refers to power factor = 0,4 in AC. and a time constant of 7 msec max. in DC.	Lamp load has an inrush current of 10 times the steady-state current.	Motor load has an inrush current of 6 times the steady-state current.	If the switch is used in a DC circuit and is subjected to a surge connect a surge suppressor across the switch.
----------------	--	--	---	---	---