

# Manually operated console minivalves Series 2

2

3/2 and 5/3-way C.C. C.O. C.P.  
Ports M5, Cartridge Ø 4



This series of miniature valves has been specially designed to satisfy all the application requirements of the controls industry with particular attention paid to the operating characteristics required from these components:

- Short operational stroke
- Small dimensions

## GENERAL DATA

<b>Valve group</b>	3/2 way/pos.
<b>Construction</b>	poppet-type (closed centres)
<b>Materials</b>	aluminium body, OT58 (brass) plunger, NBR seals
<b>Mounting</b>	panel
<b>Ports</b>	M5 or cartridge dia. 4
<b>Ambient temperature</b>	0°C + 60°C
<b>Medium temperature</b>	0°C + 50°C
<b>Operating pressure</b>	see models

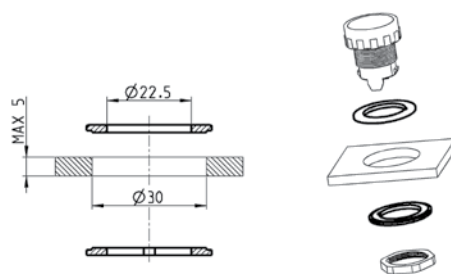
**CODING EXAMPLE**

<b>2</b>	<b>3</b>	<b>4</b>	<b>-</b>	<b>97</b>	<b>5</b>
----------	----------	----------	----------	-----------	----------

<b>2</b>	SERIES
<b>3</b>	FUNCTION: 3 = 3/2 way N.C. 4 = 3/2 way N.O. 8 = 5/3 way C.A.
<b>4</b>	PORTS: 4 = cartridge ø 4 5 = M5
<b>97</b>	MODE OF OPERATION: 87 = 3 position selector 89 = push button 97 = palm switch 90 = joystick 99 = 2 position selector 92 = pedal 904 = key
<b>5</b>	RESETTING: 5 = spring return 0 = stable 2 = latching-twist to release 54= joystick

**Adaptor**

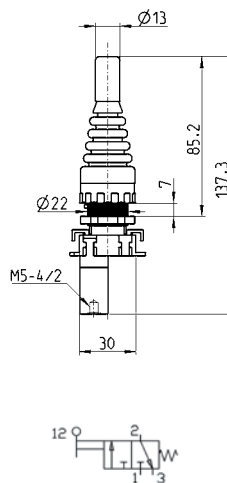
Panel hole adaptor Ø30  
 Supplied with:  
 2x reduction rings



Mod.
200-2230

**Minivalves**

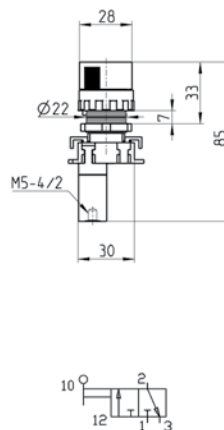
Operating pressure = 2 ÷ 8 bar  
 Flow rate = 60 NI/min.



Mod.
234-905
235-905

**Minivalves**

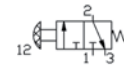
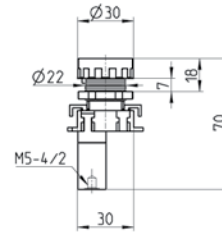
Operating pressure = 2 ÷ 8 bar  
 Flow rate = 60 NI/min.



Mod.
234-990
235-990

Minivalves

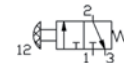
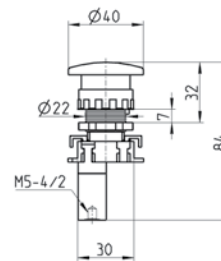
Operating pressure = 2 ÷ 8 bar  
 Flow rate = 60 NI/min.  
 Actuating force at 6 bar = 7 N



Mod.
<b>234-895</b>
<b>235-895</b>

Minivalves

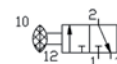
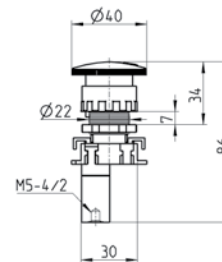
Operating pressure = 2 ÷ 8 bar  
 Flow rate = 60 NI/min.  
 Actuating force at 6 bar = 7 N



Mod.
<b>234-975</b>
<b>235-975</b>

Minivalves

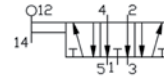
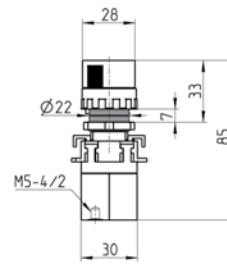
Operating pressure = 2 ÷ 8 bar  
 Flow rate = 60 NI/min.  
 Actuating force at 6 bar = 7 N



Mod.
<b>234-972</b>
<b>235-972</b>

Minivalves

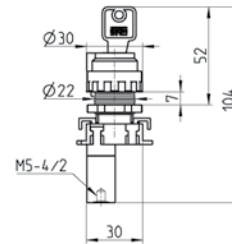
Operating pressure = 2 ÷ 8 bar  
Flow rate = 60 NI/min.



Mod.  
284-870  
285-870

Minivalves

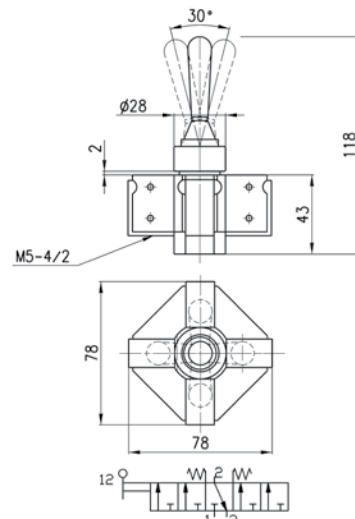
Operating pressure = 2 ÷ 8 bar  
Flow rate = 60 NI/min.



Mod.  
234-904  
235-904

Joystick valves

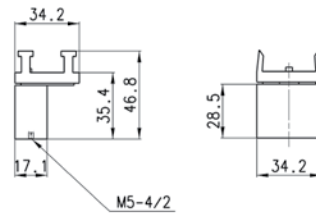
Minimum pressure = 2 bar



Mod.  
234-9054  
235-9054

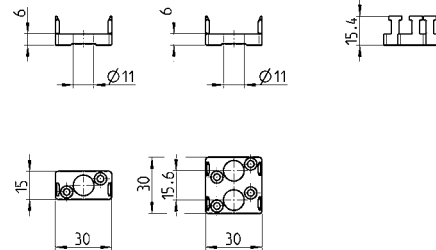
Minivalves

Operating pressure = 2 ÷ 8 bar  
Flow rate = 60 NI/min.



Mod.
<b>234-000</b>
<b>235-000</b>

End cover



Mod.
<b>210-000</b>
<b>220-000</b>