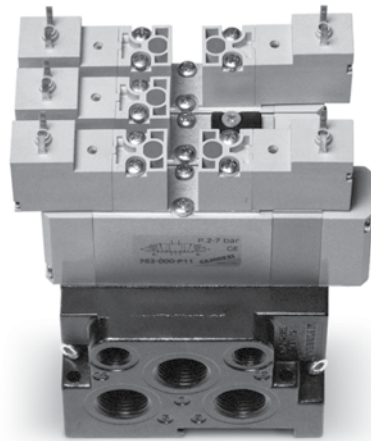


Electropneumatically and pneumatically operated valves Series 7

2

ISO valves, VDMA 24563 standards
5/2 5/3 way C.C. C.O. C.P.



Size 26 mm (VDMA 01)
Size 18 mm (VDMA 02)

GENERAL DATA

Construction	spool-type
Valve group	5/2 - 5/3 way/pos. C.C. C.O. C.P.
Materials	aluminium body, spool base, polyamide endcovers, NBR seals
Mounting	athrough holes in valve body
Ports	on sub-base
Operating temperature	0° C min. +50° C max
Fluid	filtered air (5 micron or less), without lubrication. If lubricated air is used, it is recommended to use ISOVG32 oil. Once applied the lubrication should never be interrupted.
Size	26 mm 18 mm
Installation	in any position
Operating pressure	P. max 7 bar
Nominal pressure	6 bar
Nominal flow	Qn Size 26 mm = 900 NI/min Qn Size 18 mm = 450 NI/min
Voltage	see coding
Voltage tolerance	± 10%
Power consumption	2W
Class of insulation	class F
Protection	IP 54 (IP 65 with connector DIN 40050)

CODING EXAMPLE

7 | 5 | 1 | - | N | 1 | A | - | P16 | - | 15 | - | W | 2 | 3

7	SERIES:
5	N° WAYS/POSITIONS: 5 = 5/2 6 = 5/3 Centres closed 7 = 5/3 Centres open 8 = 5/3 pressure centres
1	SIZES: 1 = size 26 mm 2 = size 18 mm
N	SUBBASE: N = (front outlet subbase)
1	PORTS: 1 = G1/4 (Size 26mm) 2 = G1/8 (Size 18mm)
A	N° OF SUBBASES: **A = 1 **B = 2 **C = 3 **D = 4 **E = 5 **F = 6 **G = 7 **H = 8 **K = 9 **L = 10 **M = 11 **N = 12 **P = 13 **R = 14 **S = 15
P16	ACTUATION: 33 = pneumatic, bistable 36 = pneumatic, monostable P11 = electro - pneumatic, bistable P16 = electro - pneumatic, monostable
15	SOLENOID INTERFACE: 15 = 15x15
W	SOLENOID TYPES: W = Series W *P = Series P
2	CONNECTION: * 1 = wire 300 mm (series W) 2 = 2 pins (series W 24V - 48V DC/AC) * 3 = 2 pins+earth (series W only 110V DC/AC) * 5 = 2 pins+earth (series P)
3	SOLENOID VOLTAGE: 3 = 24V DC * 4 = 48V DC * 6 = 110V DC * B = 24V 50/60 Hz * C = 48V 50/60 Hz * D = 110V 50/60 Hz

* on request
** complete with the two end blocks

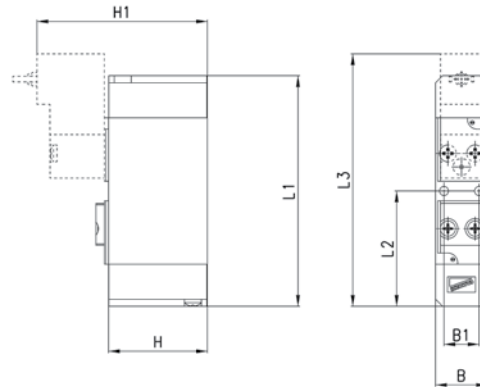
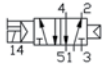


5/2-way solenoid valve, ISO 26 mm - 18 mm monostable



The Series 7 solenoid valves with interface ISO 26 mm and 18 mm which have electropneumatic actuation and spring return are suitable for mounting on a sub-base. For electrical actuation, 2 types of solenoid, Series W and Series P (available with a wide range of voltages, on request). Connector Mod. 126-800.

The following is supplied:
N° 1 interface seals
N° 2 fixing screws



DIMENSIONS

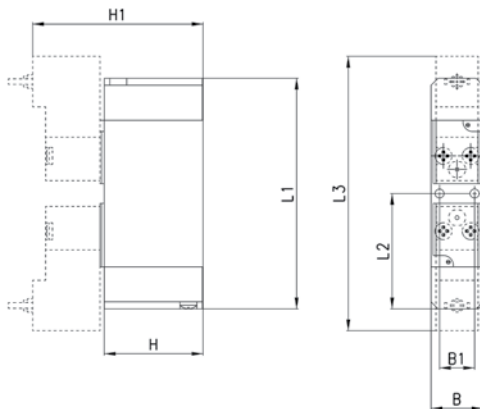
Mod.	Size ISO	B	B1	L1	L2	L3	H	H1	Min. operating pressure
751-000-P16-15-W20	26 mm	26,5	19	99,7	49,85	98,8	39	64,3	3
752-000-P16-15-W20	18 mm	18,5	12,5	82,2	41,1	90	35,2	60,5	3

5/2-way solenoid valves, ISO 26 mm - 18 mm, bistable



The Series 7 solenoid valves with ISO 26 mm and 18 mm interface which have electropneumatic actuation and return are suitable for mounting on a sub-base. For electrical actuation, 2 types of solenoid Series W and Series P (available with a wide range of voltages, on request). Connector Mod. 126-800.

The following is supplied:
N° 1 interface seals
N° 2 fixing screws



DIMENSIONS

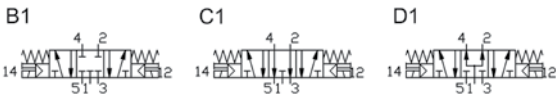
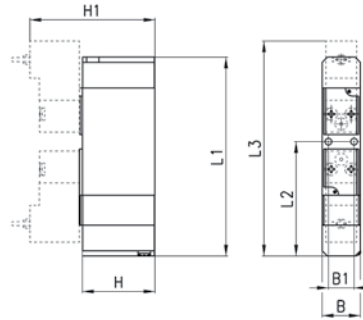
Mod.	Size ISO	B	B1	L1	L2	L3	H	H1	Min. operating pressure
751-000-P11-15-W20	26 mm	26,5	19	99,7	49,85	98,8	39	64,3	2
752-000-P11-15-W20	18 mm	18,5	12,5	82,2	41,1	97,8	35,2	60,5	2

5/3-way solenoid valves, ISO 26 mm - 18 mm



The Series 7 solenoid valves with ISO 26 mm - 18 mm interface which have electropneumatic actuation and spring return are suitable for mounting on a sub-base. For electrical actuation, two types of solenoid Series W and Series P (are available with a large range of voltages, on request). Connector Mod. 126-800.

The following is supplied:
 N° 1 interface seals
 N° 2 fixing screws



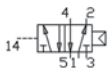
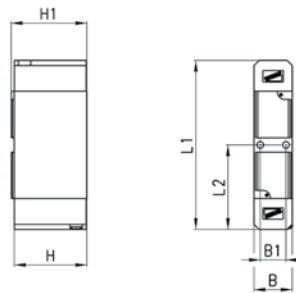
DIMENSIONS										
Mod.	Size ISO	B	B1	L1	L2	L3	H	H1	Min. operating pressure	Symbol
761-000-P11-15-W20	26 mm	26,5	19	111,7	61,85	110,8	39	64,3	3	B1
762-000-P11-15-W20	18 mm	18,5	12,5	96,7	55,6	104,5	35,2	60,5	3	B1
771-000-P11-15-W20	26 mm	26,5	19	111,7	61,85	110,8	39	64,3	3	C1
772-000-P11-15-W20	18 mm	18,5	12,5	96,7	55,6	104,5	35,2	60,5	3	C1
781-000-P11-15-W20	26 mm	26,5	19	111,7	61,85	110,8	39	64,3	3	D1
782-000-P11-15-W20	18 mm	18,5	12,5	96,7	55,6	104,5	35,2	60,5	3	D1

5/2-way solenoid valves ISO 26 mm - 18 mm, monostable



The Series 7 solenoid valves with ISO 26 mm and 18 mm interface which have pneumatic actuation and pneumatic spring return are suitable for mounting on a sub-base. For the correct use of the valve, the pilot pressure must be the same or higher than the operating pressure.

The following is supplied:
 N° 1 interface seals
 N° 2 fixing screws



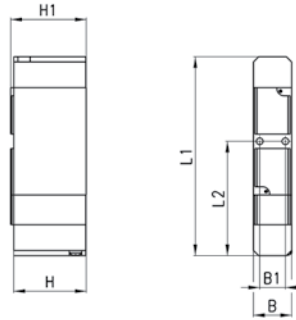
DIMENSIONS								
Mod.	Size ISO	B	B1	L1	L2	H	H1	Min. operating pressure
751-000-36	26 mm	26,5	19	99,7	49,85	39	40,5	3
752-000-36	18 mm	18,5	12,5	82,2	41,1	35,2	36,7	3

5/2-way solenoid valves ISO 26 mm - 18 mm, bistable



The Series 7 solenoid valves with ISO 26 mm and 18 mm interface which have pneumatic actuation and return are suitable for mounting on a sub-base.

The following is supplied:
N° 1 interface seals
N° 2 fixing screws



DIMENSIONS

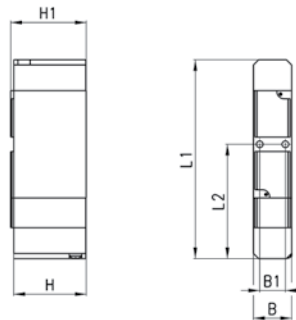
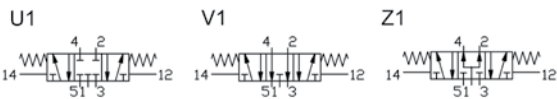
Mod.	Size ISO	B	B1	L1	L2	H	H1	Min. operating pressure
751-000-33	26 mm	26,5	19	99,7	49,85	39	40,5	2
752-000-33	18 mm	18,5	12,5	82,2	41,1	35,2	36,7	2

5/3-way solenoid valves, ISO 26 mm - 18 mm



The Series 7 solenoid valves with ISO 26 mm and 18 mm interface which have pneumatic actuation and mechanical spring return are suitable for mounting on a sub-base.

The following is supplied:
N° 1 interface seals
N° 2 fixing screws



DIMENSIONS

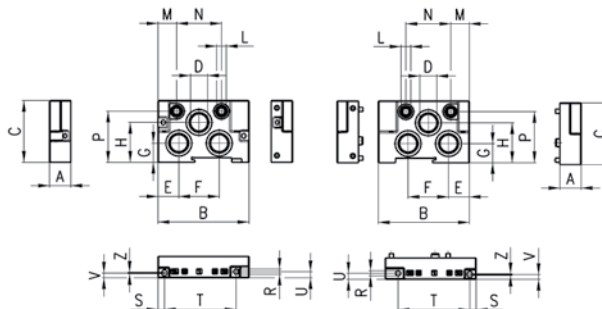
Mod.	Size ISO	B	B1	L1	L2	H	H1	Min. operating pressure	Symbol
761-000-33	26 mm	26,5	19	117,7	61,85	39	40,5	3	U1
762-000-33	18 mm	18,5	12,5	96,7	55,6	35,2	36,7	3	U1
771-000-33	26 mm	26,5	19	117,7	61,85	39	40,5	3	V1
772-000-33	18 mm	18,5	12,5	96,7	55,6	35,2	36,7	3	V1
781-000-33	26 mm	26,5	19	117,7	61,85	39	40,5	3	Z1
782-000-33	18 mm	18,5	12,5	96,7	55,6	35,2	36,7	3	Z1

End blocks for manifold bases

End blocks for manifold bases with common inlet and exhaust ports and with outlet ports on the front



The following is supplied:
 N° 1 interface seals
 N° 2 fixing screws

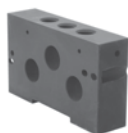


DIMENSIONS

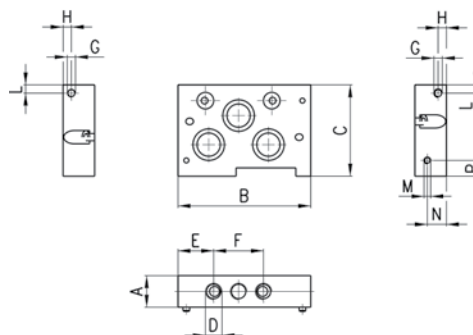
Mod.	Size ISO	A	B	C	D	E	F	G	H	L	M	N	P	R	S	T	U	V	Z
701C-HN1	25 mm	27	107	65	G1/2	23	60	24,5	43	G1/8	21,5	58	55,5	4,5	7,5	61,5	6	6,2	4
702C-HN2	18 mm	19	81	55	G3/8	18,5	36	17	35,5	G1/8	16,5	40	45,5	4,5	4,65	63,85	5,5	4,35	1,3

Supply unit for manifold bases

Supply unit for manifold bases with common inlet and exhaust ports and with outlet ports on the front.



The following is supplied:
 N° 1 interface seals
 N° 2 fixing screws



DIMENSIONS

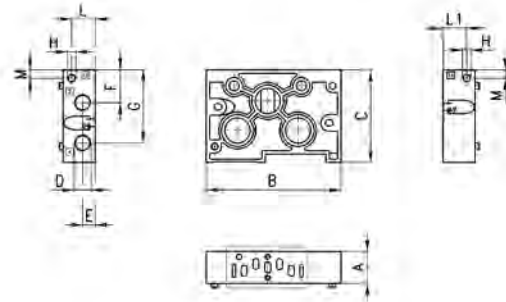
Mod.	Size ISO	A	B	C	D	E	F	G	H	L	M	N	P
701C-N1N	26 mm	27	100	65	G1/4	27	38	M5	6,5	10	M4	10	10
702C-N2N	18 mm	19	80	55	G1/8	21,5	30	M5	5	5	M4	11,5	9,5

Manifold bases

Manifold bases with common inlet and exhaust ports and with outlet ports on the front



La fornitura comprende:
N° 1 guarnizione
N° 2 viti di fissaggio



DIMENSIONS													
Mod.		Size ISO	A	B	C	D	E	F	G	H	L	L1	M
701C-N1A	for sub-base with separate pilots	26 mm	27	107	65	G1/4	11	23	53	M5	20,7	20,7	6,5
702C-N2A	for sub-base with separate pilots	18 mm	19	81	55	G1/8	7,5	19,5	44,5	M5	13	6	7
701C-N1C		26 mm	27	107	65	G1/4	11	23	53	M5	20,7	20,7	6,5
702C-N2C		18 mm	19	81	55	G1/8	7,5	19,5	44,5	M5	13	6	7

Diaphragm for manifold bases

Diaphragm for manifold bases with common inlet and exhaust ports and with outlet ports on the front.



Mod.

701C-N1A-TP

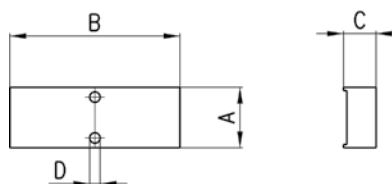
702C-N2A-TP

Excluder tap for manifold bases

The following is supplied:

N° 1 seal

N° 2 screws



DIMENSIONS

Mod.	Size ISO	A	B	C	D
701-TP	26 mm	26,5	61,7	10	4,2
702-TP	18 mm	18,5	52,2	10	3,2

Note: complete with screws and seal.

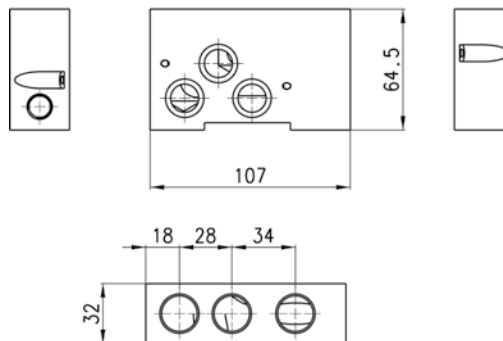
Interface between ISO 01 and ISO 02

The following is supplied:

N° 1 tap S2610 3/8

N° 5 OR

N° 2 screws



Note: complete with screws and seal.

Mod.

701C-702C-A