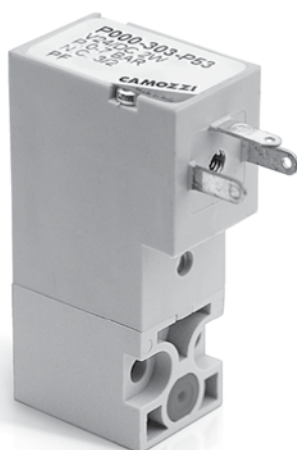


Directly operated mini-solenoid valves Series P

2

3/2 way N.C. and N.O.
Ports M5 (for single base)
Cartridge $\varnothing 3$ and 4 (for manifold)



Note: All the solenoid valves series P are basic in DC.
For their AC operation, at the same target voltage you must use the Mod. 125-900 connector.

The Series "P" are available as 3/2 ways, either normally closed (N.C.) or normally opened (N.O.).
Single or multiple manifolds are available.
Manual override simplifies plants setting.

GENERAL DATA

Valve group	3/2 Way / Pos., N.C. - N.O.
Construction	poppet type
Mounting	by means of screws on subbase ports M5
Materials	body in technopolymer NBR seals, other stainless steel
Installation	in any position
Operating temperature	0 ÷ 50°C
Operating pressure	see table
Nominal flow rate (6 bar P 1)	$\varnothing 1,5$ Qn 43 NI/min $\varnothing 1,1$ Qn 30 NI/min $\varnothing 0,8$ Qn 20 NI/min
Fluid	filtered air, without lubrication. If lubricated air is used, it is recommended to use ISOVG32oil. Once applied the lubrication should never be interrupted.
Voltage	see table
Power consumption	2 W, 1W (only 24V)
Voltage tolerances	± 10%
Class of insulation	class F
Protection class	IP65 (with connector DIN 40050)
Duty cycle	ED 100%
Response time	5 ms

CODING EXAMPLE

P	0	00	-	3	0	3	-	P	5	3
---	---	----	---	---	---	---	---	---	---	---

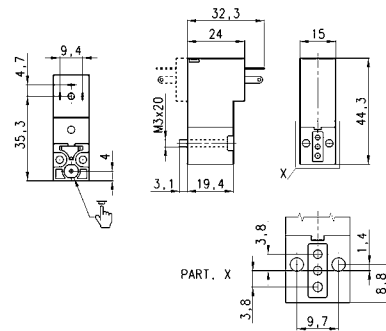
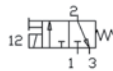
P	SERIES
0	BODY DESIGN: 0 = single sub-base (only M5) or interface 1 = single manifold 2 = double sided manifold
00	N° OF POSITIONS: 00 = interface 01 = single base (only M5) 02 + 99 = manifold N° of positions
3	N° OF PORTS AND FUNCTIONS: 0= manifold or single base 3 = 3 -ways N.C. 4= 3 -ways N.O. 5= 3 -ways N.C. electric part revolved by 180° 6= 3 -ways N.O. electric part revolved by 180°
0	PORTS: 0 = interface 3= ø 3 tube side port 4= ø 4 tube side port 7= ø 3 tube rear ports 8= ø 4 tube rear ports
3	NOMINAL DIAMETER - MAX PRESSURE 1 = ø 0,8 (1W) 10 bar (N.C. only 24V) 3 = ø 1,5 (2W) 7 bar (N.C.) 5 bar (N.O.) 5 = ø 1,1 NC (2W) 10 bar (N.C.) ø0,9 N.O. (2W) 10 bar (N.O.) * 6 = ø 1,5 N.C. (2W) 4 bar (N.C.)
P	ENCAPSULATING MATERIAL: P = thermoplastic
5	CONNECTION TYPE: 5 = 3 faston pitch 9,4
3	SOLENOID VOLTAGE: B = 24V 50/60 Hz C = 48V 50/60 Hz D = 110V50/60 Hz 3= 24V DC 4 = 48V DC 6 = 110V DC

* Voltage tolerance +10% -25%

3/2 way solenoid valve N.C.

The 3/2 way solenoid valve N.C. can be mounted on single sub-bases or manifold. These solenoid valves are provided with a manual override for stable or monostable operation.

The solenoid valve is supplied with interface seal and 2 screws.

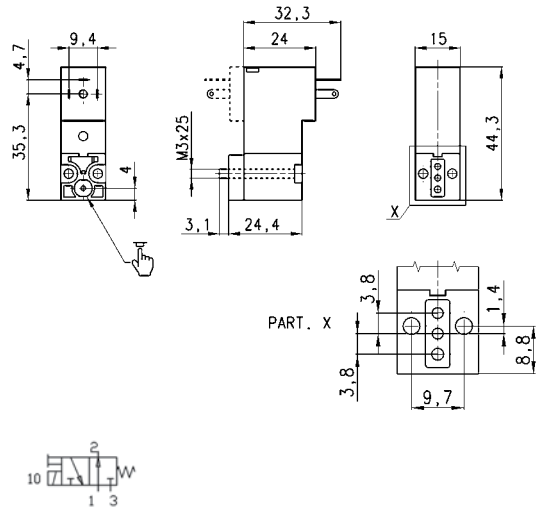


Mod.	Function	Orifice Ø mm	Qn (NI/min)	Pressure min-max bar
P000-305-P53	N.C.	1,1	30	0 + 10
P000-303-P53	N.C.	1,5	43	0 + 7

3/2 way solenoid valve N.O.

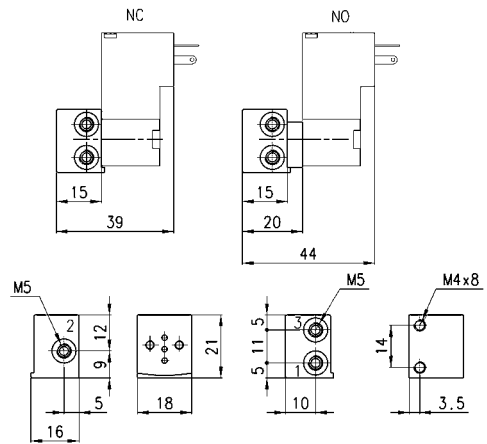


The 3/2 way solenoid valve N.O. can be mounted on single sub - bases or manifold. These solenoid valves are provided with a manual override for stable or monostable operation. The solenoid valve is supplied with interface seal and 2 screws.



Mod.	Function	Orifice Ø min	QN (Nl/min)	Pressure min-max bar
P000-405-P53	(N.O.)	0.9	20	0÷10
P000-403-P53	(N.O.)	1.5	26	0÷5

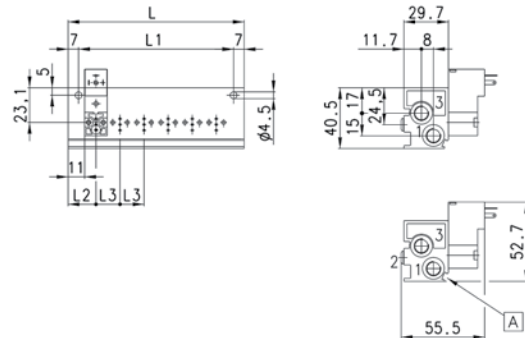
Single sub-base



Mod.
P001-02

Single manifold rear outlets

* = see the type of ports in the coding example table.



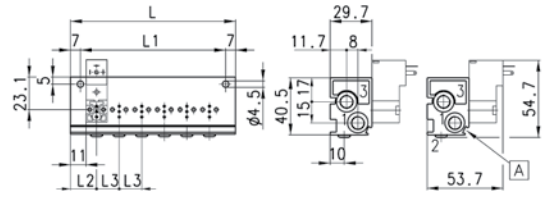
DIMENSIONS							
Mod.	N° Valves	L	L1	L2	L3	1(P)	3 (R)
P102-0*	2	53	39	18,5	16	G1/8	G1/8
P103-0*	3	69	55	18,5	16	G1/8	G1/8
P104-0*	4	85	71	18,5	16	G1/8	G1/8
P105-0*	5	101	87	18,5	16	G1/8	G1/8
P108-0*	6	117	103	18,5	16	G1/8	G1/8

A - groove for electric connection identification

Single manifold front outlets

* = see the type of ports in the coding example table.

This manifold is arranged to be fixed through DIN 46277/3 guide together with the accessory PCF-E520.



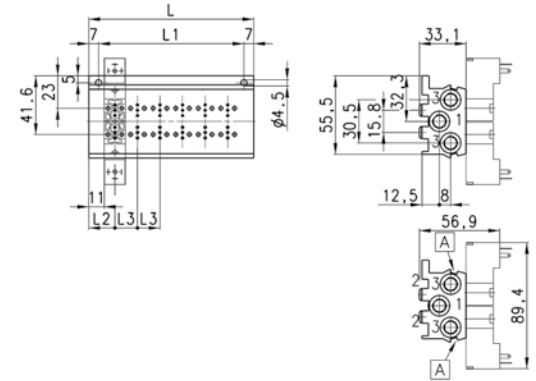
DIMENSIONS

Mod.	N° Valves	L	L1	L2	L3	1 (P)	3 (R)
P102-0*	2	53	39	18,5	16	G1/8	G1/8
P103-0*	3	69	55	18,5	16	G1/8	G1/8
P104-0*	4	85	71	18,5	16	G1/8	G1/8
P105-0*	5	101	87	18,5	16	G1/8	G1/8
P106-0*	6	117	103	18,5	16	G1/8	G1/8

A - groove for electric connection identification

Double sided manifold rear outlets

* = see the type of ports in the coding example table.



DIMENSIONS

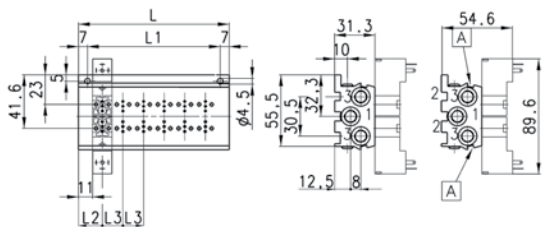
Mod.	N° Valves	L	L1	L2	L3	1(P)	3 (R)
P204-0*	4	53	39	18,5	16	G1/8	G1/8
P206-0*	6	69	55	18,5	16	G1/8	G1/8
P208-0*	8	85	71	18,5	16	G1/8	G1/8
P210-0*	10	101	87	18,5	16	G1/8	G1/8
P212-0*	12	117	103	18,5	16	G1/8	G1/8

A - groove for electric connection identification

Double sided manifold front outlets

* = see the type of ports in the coding example table.

This manifold is arranged to be fixed through DIN 46277/3 guide together with the accessory PCF-E520.



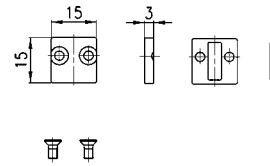
DIMENSIONS

Mod.	N° Valves	L	L1	L2	L3	1(P)	3 (R)
P204-0*	4	53	39	18,5	16	G1/8	G1/8
P206-0*	6	69	55	18,5	16	G1/8	G1/8
P208-0*	8	85	71	18,5	16	G1/8	G1/8
P210-0*	10	101	87	18,5	16	G1/8	G1/8
P212-0*	12	117	103	18,5	16	G1/8	G1/8

A - groove for electric connection identification

Excluder tap

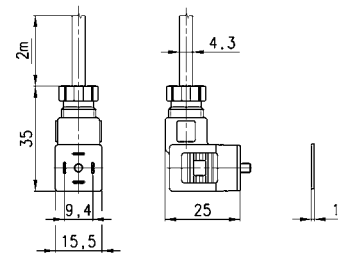
The following is supplied:
 2x screws
 1x excluder tap
 1x interface seal



Mod.
P000-TP

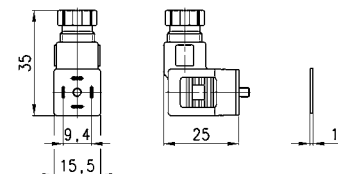
Connector Mod. 125-900 DIN 43650

To be used in all DC valves connected to a AC voltage.



Mod.
125-900

Connector Mod. 125-800 DIN 43650 pin spacing 9,4mm



Mod.
125-800