

COMPACT ONE-TOUCH FITTINGS

Application

- Compact type one-touch joints used in small types of pneumatic piping.
- A wide variety of models are available to meet most your needs.

Feature

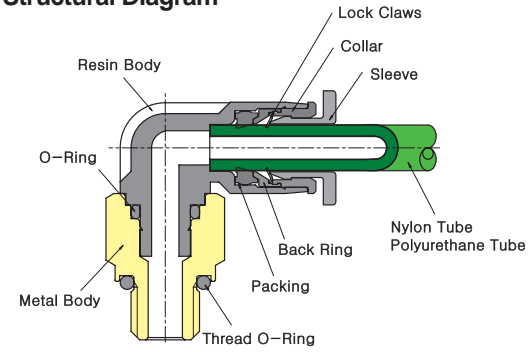
- The world's smallest quick-fitting joints feature 40% smaller volume ratio and 20% smaller O.D. ratio in comparison to the conventional type.
- The compact type joints, which are nickel plated, are excellent not only in appearance but also in rust resistance.
- The elliptical sleeve helps easy application or removal of the tube in confined space.

Specification

Fluid	Air(No other gases or liquids)	
Working Pressure Range	0~150PSI	0~9Kgf/cm ² (0~900kPa)
Negative Pressure	-29.50 in Hg	-750mmHg(10Torr)
Temperature Range	32~140° F	0~60° C
Applicable Tube Material	Polyurethane and Nylon	



Structural Diagram



Case In Use

►POC Model/PCC Model

The hexagonal shape on the inside of the body makes it possible to tighten the fitting by use of a hexagonal wrench. In the case of POC, PCC a hexagonal wrench must be used due to the round exterior.

►PLL Model/PL Model

Long brass body helps tightening with ease away from any obstacles.

Product Code System

PC 06-01 C

① ② ③ ④

① Type

② Tube Dia (ØD)

	Metric Size					Inch Size						
Code	03	04	06	10	12	16	5/32	3/16	1/4	5/16	3/8	1/2
Dia	Ø3	Ø4	Ø4	Ø10	Ø12	Ø16	Ø5/32	Ø3/16	Ø1/4	Ø5/16	Ø3/8	Ø1/2

③ Thread Size(T)

※Metric Thread & R(PT) Thread

	Metric Size			
Code	M3	M5	M6	01
Size	M5×0.8	M5×0.8	M6×1.0	R1/8

※Inch Thread (UNF & NPT)

	Unified Fine Thread	American Standard Taper Pipe Thread	
Code	U10U	N00U	N01U
Size	10-32UNF	NPT1/16	NPT1/8

④ C=COMPACT

CAUTION

- Be sure to read the "Common Precautions" and the "Using Precautions of Fitting Series" (P6) before using.
- Tube should be securely pushed into the fitting, otherwise air leakage may occur.

WARNING

- Be sure to confirm that proper conditions are met, otherwise air leakage may occur.

Compact One -Touch Fitting

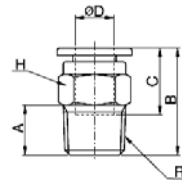
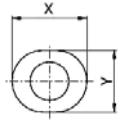


Fitting with G Thread (O-Ring)



PC-C

Male Straight



MODEL [ØD-T]

Tube (Metric) - Thread(R)

MODEL	ØD	R
PC 03-M3C	3	M3
PC 03-M5C	3	M5
PC 03-M6C	3	M6
PC 04-M3C	4	M3
PC 04-M5C	4	M5
PC 04-M6C	4	M6
PC 04-01C	4	R1/8
PC 06-M5C	6	M5
PC 06-M6C	6	M6
PC 06-01C	6	R1/8

Tube (Inch) - Thread(R)

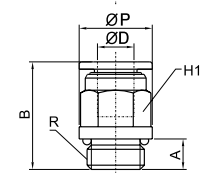
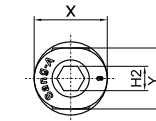
MODEL	ØD	R
PC 1/8-M3C	1/8	M3
PC 1/8-M5C	1/8	M5
PC 1/8-M6C	1/8	M6
PC 5/32-M3C	5/32	M3
PC 5/32-M5C	5/32	M5
PC 5/32-M6C	5/32	M6
PC 5/32-01C	5/32	R1/8
PC 1/4-M5C	1/4	M5
PC 1/4-M6C	1/4	M6
PC 1/4-01C	1/4	R1/8

Tube (Inch) - Thread (NPT)

MODEL	ØD	R
PC 1/8-U10UC	1/8	UNF 10 * 32
PC 1/8-N00UC	1/8	NPT1/16
PC 1/8-N01UC	1/8	NPT1/8
PC 5/32-U10UC	5/32	UNF 10 * 32
PC 5/32-N00UC	5/32	NPT1/16
PC 5/32-N01UC	5/32	NPT1/8
PC 1/4-U10UC	1/4	UNF 10 * 32
PC 1/4-N00UC	1/4	NPT1/16
PC 1/4-N01UC	1/4	NPT1/8

PC-C(G)

Male Straight



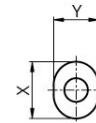
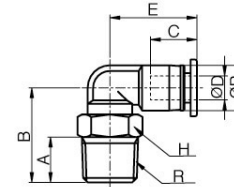
MODEL [ØD-T]

Tube (Metric) - Thread(G)

MODEL	ØD	R
PC 04G-01C	4	G1/8
PC 06G-01C	6	G1/8

PL-C

Male Elbow



MODEL [ØD-T]

Tube (Metric) - Thread(R)

MODEL	ØD	R
PL 03-M3C	3	M3
PL 03-M5C	3	M5
PL 03-M6C	3	M6
PL 04-M3C	4	M3
PL 04-M5C	4	M5
PL 04-M6C	4	M6
PL 04-01C	4	R1/8
PL 06-M5C	6	M5
PL 06-M6C	6	M6
PL 06-01C	6	R1/8

Tube (Inch) - Thread(R)

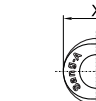
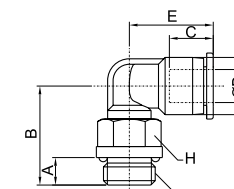
MODEL	ØD	R
PL 1/8-M3C	1/8	M3
PL 1/8-M5C	1/8	M5
PL 1/8-M6C	1/8	M6
PL 5/32-M3C	5/32	M3
PL 5/32-M5C	5/32	M5
PL 5/32-M6C	5/32	M6
PL 5/32-01C	5/32	R1/8
PL 1/4-M5C	1/4	M5
PL 1/4-M6C	1/4	M6
PL 1/4-01C	1/4	R1/8

Tube (Inch) - Thread (NPT)

MODEL	ØD	R
PL 1/8-U10UC	1/8	UNF 10 * 32
PL 1/8-N00UC	1/8	NPT1/16
PL 1/8-N01UC	1/8	NPT1/8
PL 5/32-U10UC	5/32	UNF 10 * 32
PL 5/32-N00UC	5/32	NPT1/16
PL 5/32-N01UC	5/32	NPT1/8
PL 1/4-U10UC	1/4	UNF 10 * 32
PL 1/4-N00UC	1/4	NPT1/16
PL 1/4-N01UC	1/4	NPT1/8

PL-C(G)

Male Elbow



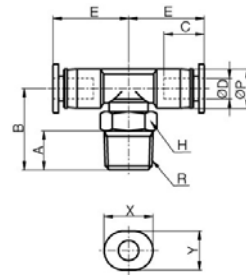
MODEL [ØD-T]

Tube (Metric) - Thread(G)

MODEL	ØD	R
PL 04G-01C	4	G1/8
PL 06G-01C	6	G1/8

PT-C

Male Branch Tee



MODEL [ØD-T]

Tube (Metric) - Thread(R)

MODEL	ØD	R
PT 03-M3C	3	M3
PT 03-M5C	3	M5
PT 03-M6C	3	M6
PT 04-M3C	4	M3
PT 04-M5C	4	M5
PT 04-M6C	4	M6
PT 04-01C	4	R1/8
PT 06-M5C	6	M5
PT 06-M6C	6	M6
PT 06-01C	6	R1/8

Tube (Inch) - Thread(R)

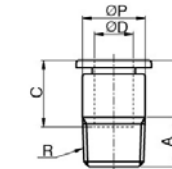
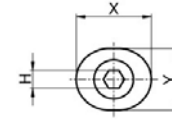
MODEL	ØD	R
PT 1/8-M3C	1/8	M3
PT 1/8-M5C	1/8	M5
PT 1/8-M6C	1/8	M6
PT 5/32-M3C	5/32	M3
PT 5/32-M5C	5/32	M5
PT 5/32-M6C	5/32	M6
PT 5/32-01C	5/32	R1/8
PT 1/4-M5C	1/4	M5
PT 1/4-M6C	1/4	M6
PT 1/4-01C	1/4	R1/8

Tube (Inch) - Thread (NPT)

MODEL	ØD	R
PT 1/8-U10UC	1/8	UNF 10 *32
PT 1/8-N00UC	1/8	NPT1/16
PT 1/8-N01UC	1/8	NPT1/8
PT 5/32-U10UC	5/32	UNF 10 *32
PT 5/32-N00UC	5/32	NPT1/16
PT 5/32-N01UC	5/32	NPT1/8
PT 1/4-U10UC	1/4	UNF 10 *32
PT 1/4-N00UC	1/4	NPT1/16
PT 1/4-N01UC	1/4	NPT1/8

POC-C

Round Male Straight



MODEL [ØD-T]

Tube (Metric) - Thread(R)

MODEL	ØD	R
POC 03-M3C	3	M3
POC 03-M5C	3	M5
POC 03-M6C	3	M6
POC 04-M3C	4	M3
POC 04-M5C	4	M5
POC 04-M6C	4	M6
POC 04-01C	4	R1/8
POC 06-M5C	6	M5
POC 06-M6C	6	M6
POC 06-01C	6	R1/8

Tube (Inch) - Thread(R)

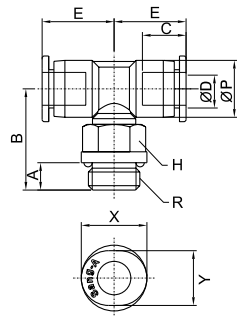
MODEL	ØD	R
POC 1/8-M3C	1/8	M3
POC 1/8-M5C	1/8	M5
POC 1/8-M6C	1/8	M6
POC 5/32-M3C	5/32	M3
POC 5/32-M5C	5/32	M5
POC 5/32-M6C	5/32	M6
POC 5/32-01C	5/32	R1/8
POC 1/4-M5C	1/4	M5
POC 1/4-M6C	1/4	M6
POC 1/4-01C	1/4	R1/8

Tube (Inch) - Thread (NPT)

MODEL	ØD	R
POC 1/8-U10UC	1/8	UNF 10 *32
POC 1/8-N00UC	1/8	NPT1/16
POC 1/8-N01UC	1/8	NPT1/8
POC 5/32-U10UC	5/32	UNF 10 *32
POC 5/32-N00UC	5/32	NPT1/16
POC 5/32-N01UC	5/32	NPT1/8
POC 1/4-U10UC	1/4	UNF 10 *32
POC 1/4-N00UC	1/4	NPT1/16
POC 1/4-N01UC	1/4	NPT1/8

PT-C(G)

Male Branch Tee



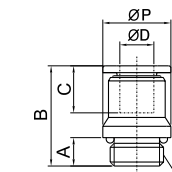
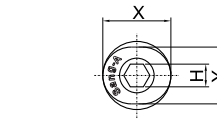
MODEL [ØD-T]

Tube (Metric) - Thread(G)

MODEL	ØD	R
PT 04G-01C	4	G1/8
PT 06G-01C	6	G1/8

POC-C(G)

Round Male Straight



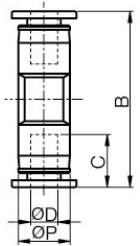
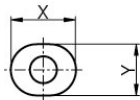
MODEL [ØD-T]

Tube (Metric) - Thread(G)

MODEL	ØD	R
POC 04G-01C	4	G1/8
POC 06G-01C	6	G1/8

PUC-C

Union Straight



MODEL [ØD-T]

Tube (Metric) - Thread(R)

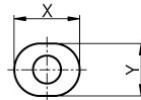
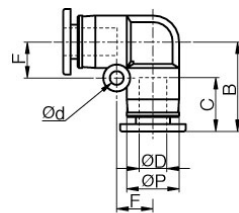
MODEL	ØD
PUC 03C	3
PUC 04C	4
PUC 06C	6

Tube (Inch) - Thread (NPT)

MODEL	ØD
PUC 1/8C	1/8
PUC 5/32C	5/32
PUC 1/4C	1/4

PUL-C

Union Straight



MODEL [ØD-T]

Tube (Metric) - Thread(R)

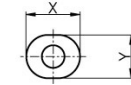
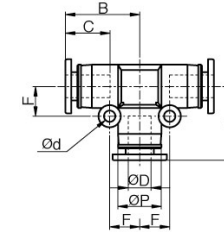
MODEL	ØD
PUL 03C	3
PUL 04C	4
PUL 06C	6

Tube (Inch) - Thread (NPT)

MODEL	ØD
PUL 1/8C	1/8
PUL 5/32C	5/32
PUL 1/4C	1/4

PUT-C

Union Tee



MODEL [ØD-T]

Tube (Metric) - Thread(R)

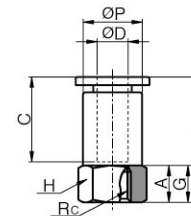
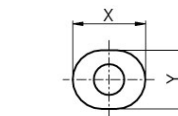
MODEL	ØD
PUT 03C	3
PUT 04C	4
PUT 06C	6

Tube (Inch) - Thread (NPT)

MODEL	ØD
PUT 1/8C	1/8
PUT 5/32C	5/32
PUT 1/4C	1/4

PCF-C

Female Straight



MODEL [ØD-T]

Tube (Metric) - Thread(R)

MODEL	ØD	Rc
PCF 03-M3C	3	M3
PCF 03-M5C	3	M5
PCF 04-M3C	4	M3
PCF 04-M5C	4	M5

Tube (Inch) - Thread (R)

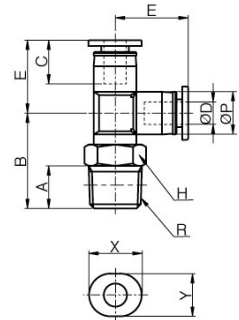
MODEL	ØD	Rc
PCF 1/8-M3C	1/8	M3
PCF 1/8-M5C	1/8	M5
PCF 5/32-M3C	5/32	M3
PCF 5/32-M5C	5/32	M5

Tube (Inch) - Thread (NPT)

MODEL	ØD	Rc
PCF 1/8-U10UC	1/8	UNF 10 * 32
PCF 1/8-N00UC	1/8	NPT1/6
PCF 5/32-U10UC	5/32	UNF 10 * 32
PCF 5/32-N00UC	5/32	NPT1/6

PST-C

Male Run Tee



MODEL [ØD-T]

Tube (Metric) - Thread(R)

MODEL	ØD	R
PST 03-M3C	3	M3
PST 03-M5C	3	M5
PST 03-M6C	3	M6
PST 04-M3C	4	M3
PST 04-M5C	4	M5
PST 04-M6C	4	M6
PST 04-01C	4	R1/8
PST 06-M5C	6	M5
PST 06-M6C	6	M6
PST 06-01C	6	R1/8

Tube (Inch) - Thread(R)

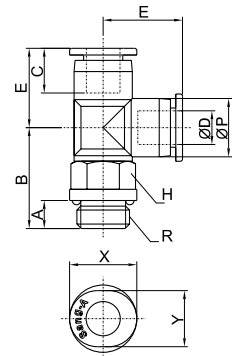
MODEL	ØD	R
PST 1/8-M3C	1/8	M3
PST 1/8-M5C	1/8	M5
PST 1/8-M6C	1/8	M6
PST 5/32-M3C	5/32	M3
PST 5/32-M5C	5/32	M5
PST 5/32-M6C	5/32	M6
PST 5/32-01C	5/32	R1/8
PST 1/4-M5C	1/4	M5
PST 1/4-M6C	1/4	M6
PST 1/4-01C	1/4	R1/8

Tube (Inch) - Thread (NPT)

MODEL	ØD	R
PST 1/8-U10UC	1/8	UNF 10 *32
PST 1/8-N00UC	1/8	NPT1/16
PST 1/8-N01UC	1/8	NPT1/8
PST 5/32-U10UC	5/32	UNF 10 *32
PST 5/32-N00UC	5/32	NPT1/16
PST 5/32-N01UC	5/32	NPT1/8
PST 1/4-U10UC	1/4	UNF 10 *32
PST 1/4-N00UC	1/4	NPT1/16
PST 1/4-N01UC	1/4	NPT1/8

PST-C(G)

Male Run Tee



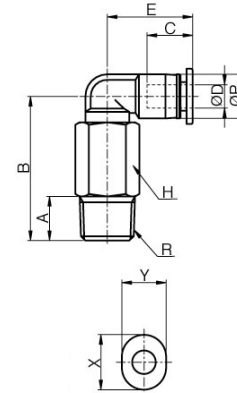
MODEL [ØD-T]

Tube (Metric) - Thread(G)

MODEL	ØD	R
PST 04G-01C	4	G1/8
PST 06G-01C	6	G1/8

PLL-C

Extended Male Elbow



MODEL [ØD-T]

Tube (Metric) - Thread(R)

MODEL	ØD	R
PLL 03-M3C	3	M3
PLL 03-M5C	3	M5
PLL 04-M3C	4	M3
PLL 04-M5C	4	M5
PLL 04-M6C	4	M6
PLL 04-01C	4	R1/8
PLL 06-M5C	6	M5
PLL 06-M6C	6	M6
PLL 06-01C	6	R1/8

Tube (Inch) - Thread(R)

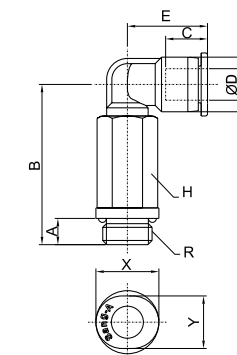
MODEL	ØD	R
PLL 1/8-M3C	1/8	M3
PLL 1/8-M5C	1/8	M5
PLL 1/8-M6C	1/8	M6
PLL 5/32-M3C	5/32	M3
PLL 5/32-M5C	5/32	M5
PLL 5/32-M6C	5/32	M6
PLL 5/32-01C	5/32	R1/8
PLL 1/4-M5C	1/4	M5
PLL 1/4-M6C	1/4	M6
PLL 1/4-01C	1/4	R1/8

Tube (Inch) - Thread (NPT)

MODEL	ØD	R
PLL 1/8-U10UC	1/8	UNF 10 *32
PLL 1/8-N00UC	1/8	NPT1/16
PLL 1/8-N01UC	1/8	NPT1/8
PLL 5/32-U10UC	5/32	UNF 10 *32
PLL 5/32-N00UC	5/32	NPT1/16
PLL 5/32-N01UC	5/32	NPT1/8
PLL 1/4-U10UC	1/4	UNF 10 *32
PLL 1/4-N00UC	1/4	NPT1/16
PLL 1/4-N01UC	1/4	NPT1/8

PLL-C(G)

Extended Male Elbow



MODEL [ØD-T]

Tube (Metric) - Thread(G)

MODEL	ØD	R
PLL 04G-01C	4	G1/8
PLL 06G-01C	6	G1/8

PGJ-C

Reducer



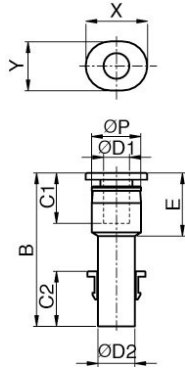
MODEL [ØD-T]

Tube (Metric) - Thread(R)

MODEL	ØD1	ØD2
PGJ 04-03C	4	3
PGJ 06-04C	6	4

Tube (Inch) - Thread (NPT)

MODEL	ØD1	ØD2
PGJ 5/32C-1/8C	5/32	1/8
PGJ 1/4C-5/32C	1/4	5/32



PW-C

Reducer Y



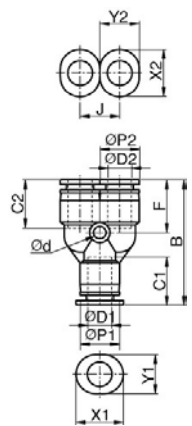
MODEL [ØD-T]

Tube (Metric) - Thread(R)

MODEL	ØD1	ØD2
PW 04-03C	4	3
PW 06-04C	6	4

Tube (Inch) - Thread (NPT)

MODEL	ØD1	ØD2
PW 1/8C-03C	1/8	3
PW 5/32C-1/8C	5/32	1/8
PW 1/4C-5/32C	1/4	5/32



PWJ-C

Plug-In Reducer Y



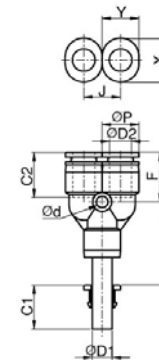
MODEL [ØD-T]

Tube (Metric) - Thread(R)

MODEL	ØD1	ØD2
PWJ 04-03C	4	3
PWJ 06-04C	6	4

Tube (Inch) - Thread (NPT)

MODEL	ØD1	ØD2
PWJ 1/8C-03C	1/8	3
PWJ 5/32C-1/8C	5/32	1/8
PWJ 1/4C-5/32C	1/4	5/32



PLJ-C

Plug-In Elbow



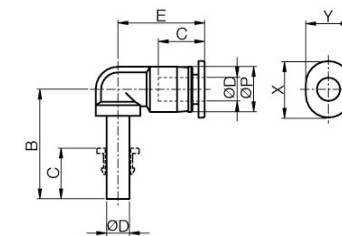
MODEL [ØD-T]

Tube (Metric) - Thread(R)

MODEL	ØD
PLJ 03C	3
PLJ 04C	4
PLJ 06C	6

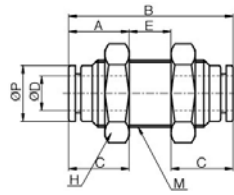
Tube (Inch) - Thread (NPT)

MODEL	ØD
PLJ 1/8C	1/8
PLJ 5/32C	5/32
PLJ 1/4C	1/4a



PMM-C

Bulkhead Union



MODEL [ØD-T]

Tube (Metric) - Thread(R)

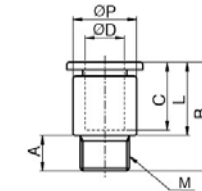
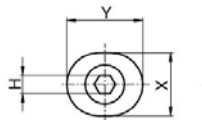
MODEL	ØD
PMM 03C	3
PMM 04C	4
PMM 06C	6

Tube (Inch) - Thread (NPT)

MODEL	ØD
PMM 1/8C	1/8

PCC-C

Round Male Straight



MODEL [ØD-T]

Tube (Metric) - Thread(R)

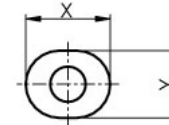
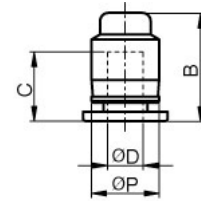
MODEL	ØD	R
PCC 03-M6C	3	M6
PCC 04-M6C	4	M6
PCC 04-M8C	4	M8
PCC 06-M8C	6	M8

Tube (Inch) - Thread(R)

MODEL	ØD	R
PCC 1/8- M6C	1/8	M6

PPF-C

Cap



MODEL [ØD-T]

Tube (Metric) - Thread(R)

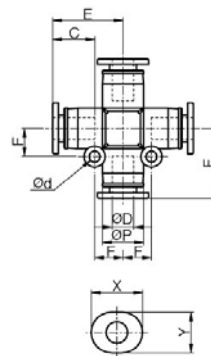
MODEL	ØD
PPF 03C	3
PPF 04C	4
PPF 06C	6

Tube (Inch) - Thread (NPT)

MODEL	ØD
PPF 1/8C	1/8
PPF 5/32C	5/32
PPF 1/4C	1/4

PZA-C

Union Cross



MODEL [ØD-T]

Tube (Metric) - Thread(R)

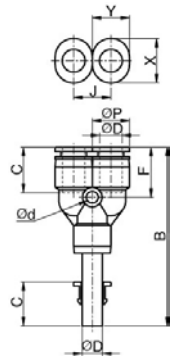
MODEL	ØD
PZA 03C	3
PZA 04C	4
PZA 06C	6

Tube (Inch) - Thread (NPT)

MODEL	ØD
PZA 1/8C	1/8
PZA 5/32C	5/32
PZA 1/4C	1/4

PYJ-C

Plug-In Y



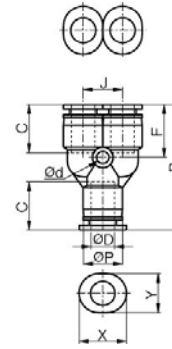
MODEL [ØD-T]

Tube (Metric) - Thread(R)		
MODEL	ØD	
PYJ 03C	3	
PYJ 04C	4	
PYJ 06C	6	

Tube (Inch) - Thread (NPT)		
MODEL	ØD	
PYJ 1/8C	1/8	
PYJ 5/32C	5/32	
PYJ 1/4C	1/8	

PY-C

Union Y



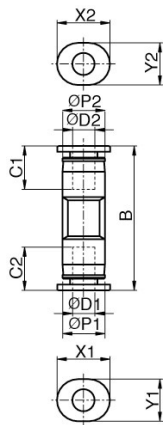
MODEL [ØD-T]

Tube (Metric) - Thread(R)		
MODEL	ØD	
PY 03C	3	
PY 04C	4	
PY 06C	6	

Tube (Inch) - Thread (NPT)		
MODEL	ØD	
PY 1/8C	1/8	
PY 5/32C	5/32	
PY 1/4C	1/4	

PG-C

Reducer



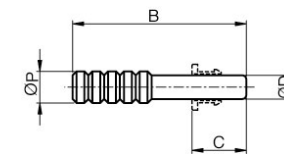
MODEL [ØD1-T1]

Tube (Metric) - Thread(R)			
MODEL	ØD1	ØD2	
PG 0403C	4	3	
PG 0604C	6	4	

Tube (Inch) - Thread (NPT)			
MODEL	ØD1	ØD2	
PG 5/32C-1/8C	5/32	1/8	

PP-C

Plug



MODEL [ØD-T]

Tube (Metric) - Thread(R)		
MODEL	ØD	
PP 03C	3	

Tube (Inch) - Thread (NPT)		
MODEL	ØD	
PP1/8C	1/8	

PLM-C

Bulkhead Union P



MODEL [ØD-T]

Tube (Metric) - Thread(R)

MODEL	ØD
PLM 03C	3
PLM 04C	4
PLM 06C	6

